

LEGEND

| | | | | | | | | | |
|--|----------|--|----------------|--|----------------|--|----------|--|-----------|
| | < 8 | | < 8 ft | | Green Passing | | Green | | Green CAN |
| | 8 - 9 | | 8 - 9 ft | | Red Passing | | Red | | Red NUN |
| | 9 - 9.5 | | 9 - 10 ft | | Green Crossing | | Junction | | |
| | 9.5 - 10 | | 10 - 12 ft | | Red Crossing | | | | |
| | 10 - 12 | | River Mile | | | | | | |
| | 12 - 14 | | Sailing Line | | | | | | |
| | 14 - 16 | | BSNP Structure | | | | | | |
| | > 16 | | Levee | | | | | | |

Buoy

Green CAN
 Red NUN

Scale: 0 312.5 625 937.5 1,250 2,500 Feet

NOTES:
Horizontal Coordinate System: World Geodetic System of 1984 (WGS84), projected to the Universal Transverse Mercator (UTM) Zone 15 North. Distance units in U.S. Survey Feet.
Vertical Datum: Soundings are shown in feet and indicated depths are referenced to water surface at time of collection.
The information depicted on this map represents the results of a survey conducted on the date indicated and can only be considered to represent the general condition existing at that time.
The location of navigation aids are based on and provided by the U.S. Coast Guard.



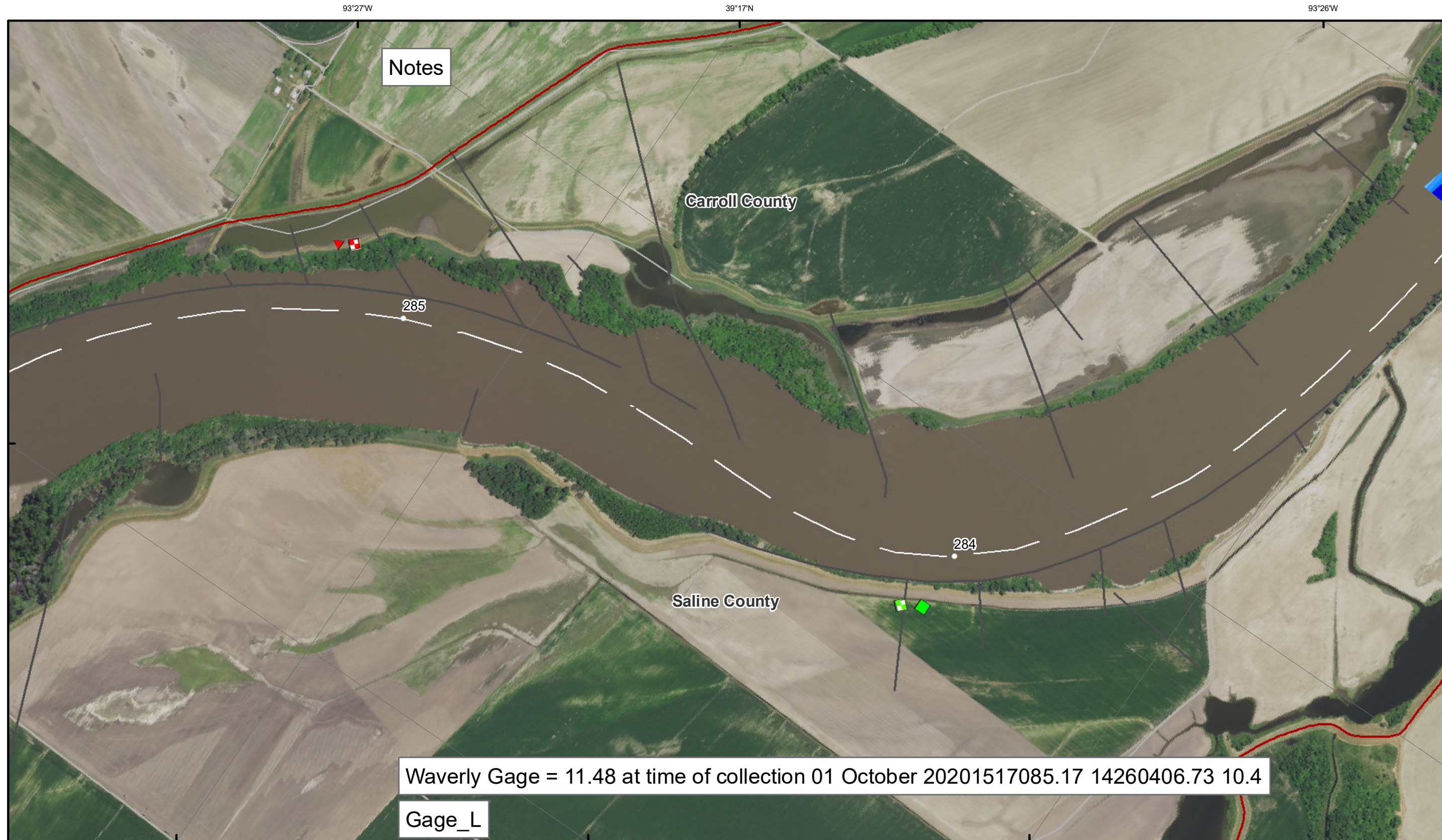
DISCLAIMER: The U.S. Army Corps of Engineers (USACE) provides this information as a service to the public. It is not intended for use in any legal proceeding. The USACE makes no warranty, express or implied, regarding the accuracy, reliability, or completeness of the information provided. The USACE is not responsible for any errors or omissions in this information. The user assumes all liability for any use of this information. The USACE is not responsible for any damage or loss resulting from the use of this information. The USACE is not responsible for any damage or loss resulting from the use of this information.

| | |
|--|-------|
| KANSAS CITY DISTRICT MISSOURI RIVER AREA OFFICE | |
| Submitted By: | MIRAO |
| Reviewed By: | MIRAO |
| Checked By: | MIRAO |

Survey Information

MO_03_LMR
MO_03_LMR_20201001_CS_281_5_283_0_SORT
01 October 2020

Sheet Number
34 of 42



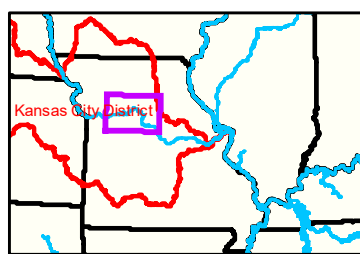
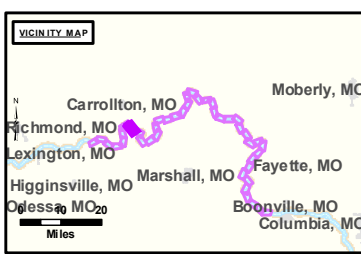
Notes

285

284

Waverly Gage = 11.48 at time of collection 01 October 20201517085.17 14260406.73 10.4

Gage_L



LEGEND

| | | | | | | | | | |
|--|----------|--|----------------|--|----------------|--|----------|--|-----------|
| | < 8 | | < 8 ft | | Green Passing | | Green | | Green CAN |
| | 8 - 9 | | 8 - 9 ft | | Red Passing | | Red | | Red NUN |
| | 9 - 9.5 | | 9 - 10 ft | | Green Crossing | | Red | | |
| | 9.5 - 10 | | 10 - 12 ft | | Red Crossing | | Junction | | |
| | 10 - 12 | | River Mile | | | | | | |
| | 12 - 14 | | Sailing Line | | | | | | |
| | 14 - 16 | | BSNP Structure | | | | | | |
| | > 16 | | Levee | | | | | | |

NOTES:
 Horizontal Coordinate System:
 World Geodetic System of 1984 (WGS84), projected to the Universal Transverse Mercator (UTM) Zone 15 North.
 Distance units in U.S. Survey Feet
 Vertical Datum:
 Soundings are shown in feet and indicated depths are referenced to water surface at time of collection.
 The information depicted on this map represents the results of a survey conducted on the date indicated and can only be considered to represent the general condition existing at that time.
 The location of navigation aids are based on and provided by the U.S. Coast Guard.



DISCLAIMER: The U.S. Army Corps of Engineers (USACE) provides this information as a service to the public. It is not intended to be used for any purpose other than that for which it was intended. The USACE makes no warranty, express or implied, regarding the accuracy, reliability, or completeness of the information. The USACE is not responsible for any errors or omissions in this information. The USACE is not liable for any damages, including consequential damages, arising from the use of this information. The USACE is not responsible for any actions taken based on this information. The USACE is not responsible for any actions taken based on this information.

| | |
|--|------|
| KANSAS CITY DISTRICT MISSOURI RIVER AREA OFFICE | |
| Submitted By: | MRAO |
| Reviewed By: | MRAO |
| Checked By: | MRAO |

Survey Information
 MO_03_LMR
 MO_03_LMR_20201001_CS_281_5_283_0_SORT
 01 October 2020

Sheet Number
 35 of 42